



*Serving Sutter and Yuba Counties*



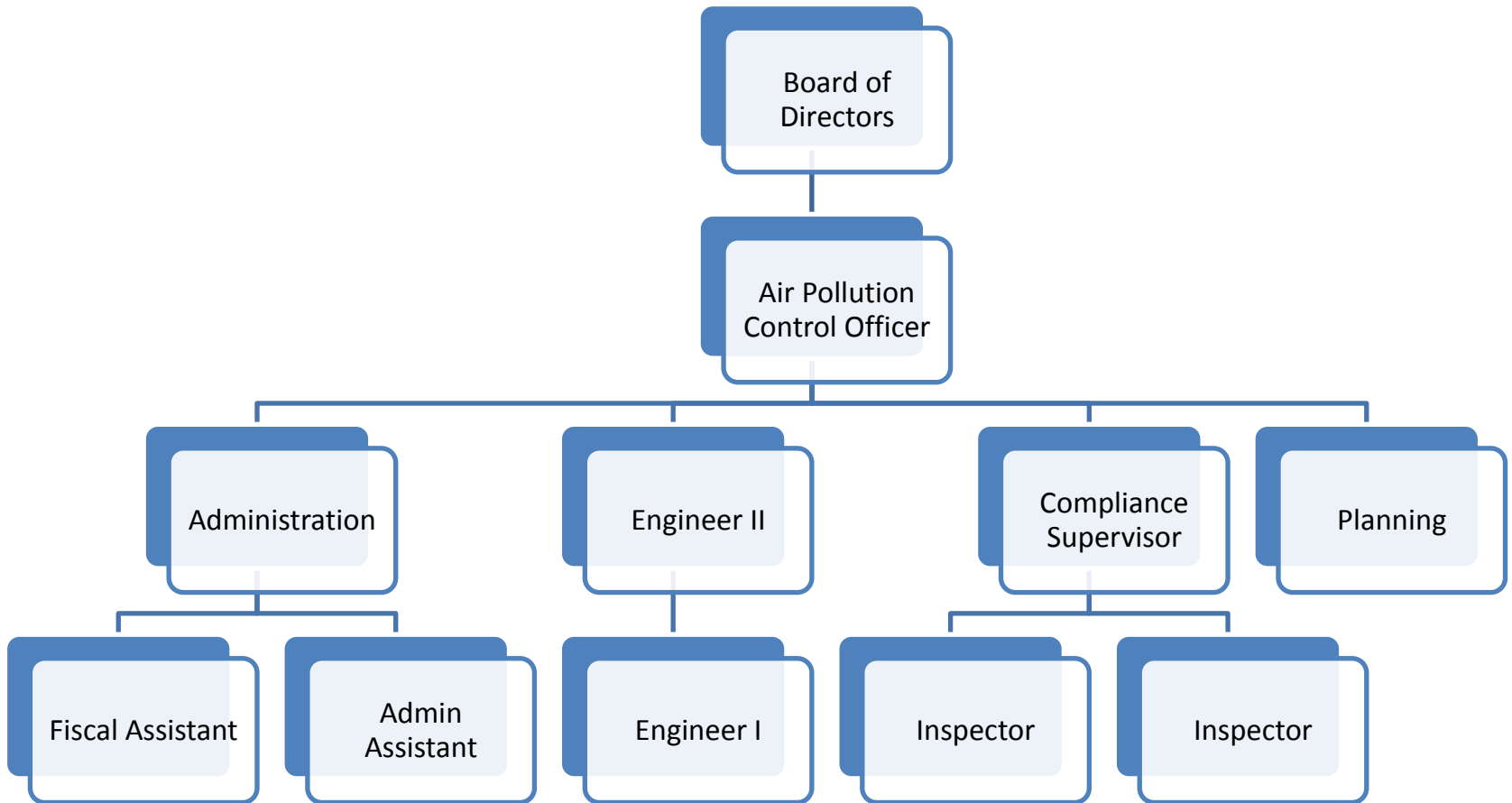
**FRAQMD Office @ 541 Washington Street Yuba City**



**Monitoring Station – Almond Street Yuba City**



**Monitoring Station – South Butte**

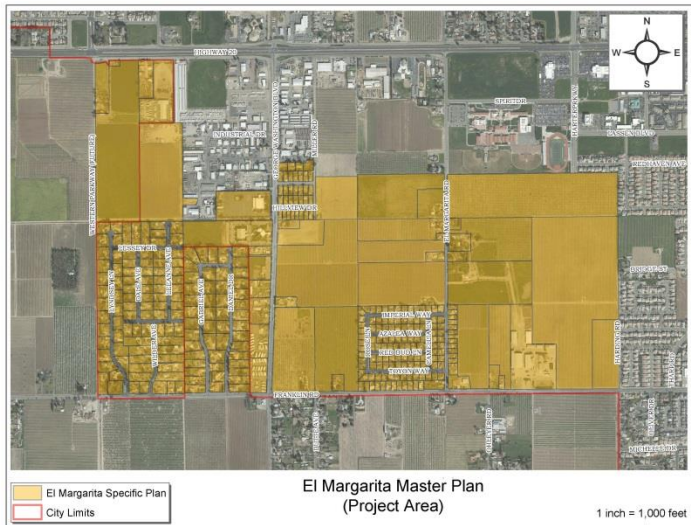




California Environmental Protection Agency  
 **Air Resources Board**



# Air Quality Planner





## **Air Quality Engineers/Compliance Staff**

Engineers write the permits; Compliance enforces them

# Engines





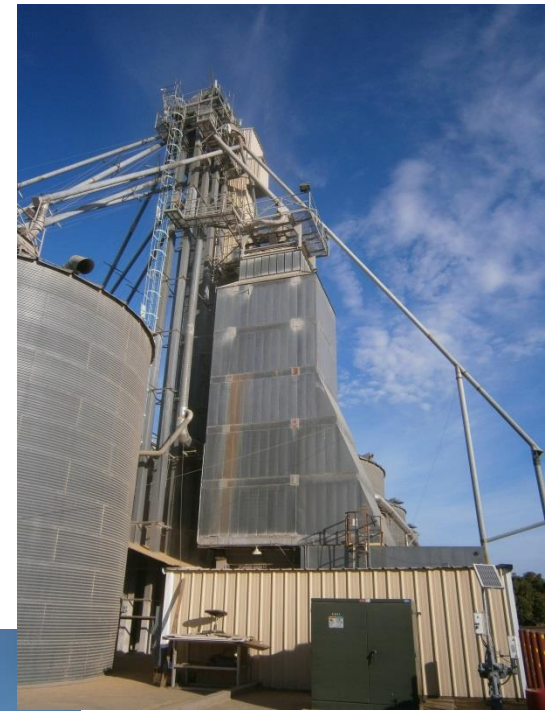
# Gasoline Dispensing Facilities



# Coatings, Solvents



# Agricultural Processing



# Combustion – Boilers, Ovens, Heaters



# Particulate Control – Baghouses, Cyclones



# Outdoor Burning



# Unexpected Challenges

## Arrest made after string of fires set at Shanghai Bend

Story Comments Image (7)

Previous Next



Kirk Barron/Appeal-Democrat

### Shanghai Bend Fire

A crew from Yuba City Fire Department keeps an eye on a smoldering fire that began Wednesday evening at Shanghai Bend in south Yuba City Thursday, Aug. 11, 2016.

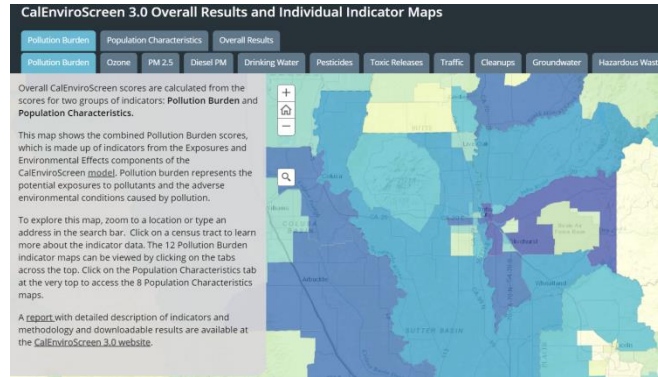
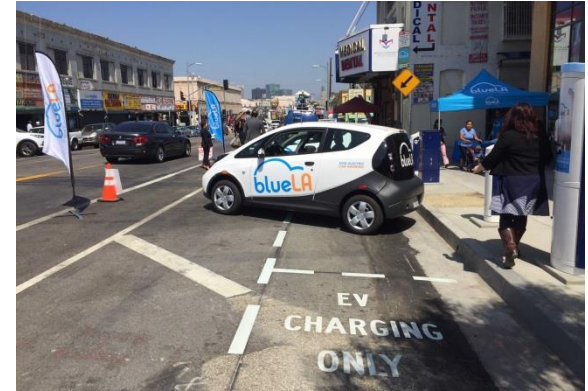
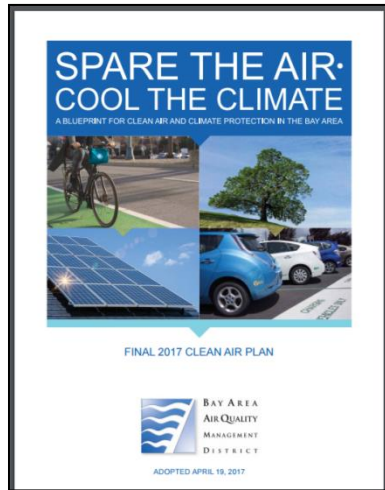
## 2011 Fukushima Daiichi Nuclear Plant



## 2017 Oroville Dam Repairs and Naturally Occurring Asbestos



# Lots of Challenges Ahead...



Shop for portable a... on Google Sponsored

<p>TSI IAQ-Calc Air Quality Meter ... \$567.00 FLW Instruments..</p>	<p>RAE Systems MiniRAE 3000 ... \$3,960.00 Instrumart Free shipping</p>	<p>Air Mentor PRO A 6-in-1 Indoor Air \$199.99 Amazon.com Free shipping</p>
<p>TSI Velocicalc Air Velocity Meter ... \$1,075.50 FLW Instruments..</p>	<p>OMEGA   Handheld ... \$465.00 OMEGA Engine...</p>	<p>Fluke 62 MAX Compact ... \$99.99 Cole-Parmer Special offer</p>

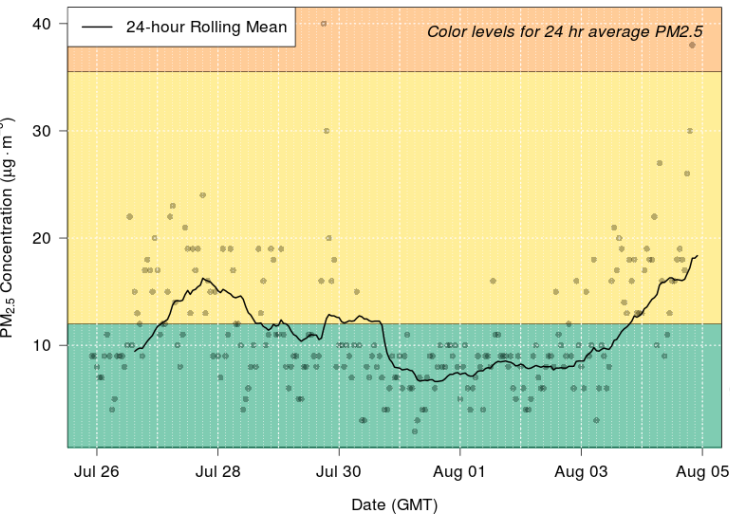


# Demonstration of EBAM



# E-BAM Data -> Air Advisories/Alerts

**24-Hour Rolling Mean of Raw PM2.5 Data**  
**Yuba City ( 061010003 )**  
 Operated by California Air Resources Board



moderate



## Air Quality Advisory for September 22-23, 2014

The Feather River Air Quality Management District Air Pollution Control Officer is issuing this Air Quality Advisory to notify the public of poor air quality conditions in Yuba and Sutter Counties due to wildfire smoke. The King Fire is still producing large amounts of smoke which includes emissions of fine particulate matter (PM<sub>2.5</sub>). The District's portable air quality monitor (E-BAM) located in Oregon House is currently recording Unhealthy levels of PM<sub>2.5</sub>.

Air quality is forecast to be moderate in areas without smoke impacts, however local conditions may rapidly deteriorate and residents are advised to take precautions if they see or smell smoke. Forecasts are predicting the southerly winds will push the smoke plume towards Nevada later today, however currently the smoke plume is migrating directly into the Sacramento Valley and towards Yuba and Sutter Counties. Areas may be intermittently impacted as the winds shift and temperatures change.

The major air pollutant of concern is PM<sub>2.5</sub> however ozone may also be present. While all persons may experience varying degrees of symptoms, the more sensitive individuals, such as the young, aged and those with respiratory conditions are of greatest risk at experiencing more aggravated symptoms. At the unhealthy level everyone may begin to experience adverse health effects, which may include, but are not limited to coughing, watery and itchy eyes, and difficulty in breathing.

Particulate and ozone concentrations from the monitor in Yuba City can be viewed online at: [www.fraqmd.org](http://www.fraqmd.org). Current air quality across California can be viewed at [www.airnow.gov](http://www.airnow.gov).

Individuals who see or smell smoke should take the following actions to protect their health:

- Avoid voluntary outdoor activities if you can see or smell smoke, even if you're healthy
- Children, the elderly and people with respiratory or heart conditions should be particularly careful to avoid exposure
- Stay indoors with doors and windows closed as much as possible
- Asthmatics should follow their asthma management plan
- Contact your doctor if you have symptoms of cough, shortness of breath, or other symptoms you believe to be caused by smoke
- Those with heart disease should especially limit their smoke exposure since PM can cause heart attacks

The very small particles in smoke can irritate the lungs of even healthy people, but are especially dangerous for seniors, children and those with lung and heart disease. For more information on health effects of smoke please visit: [http://www.airnow.gov/files/files/health/smoke\\_alert](http://www.airnow.gov/files/files/health/smoke_alert)

Disposable particulate respirators found at hardware stores can be effective at reducing exposure to smoke particles as long as they seal closely to the wearer's face. Look for respirators that have two straps and have the words "NIOSH" and either "P100" or "N95" printed on the filter material.

For additional information please visit [www.fraqmd.org](http://www.fraqmd.org) or call the District office at (530) 634-7859.

